

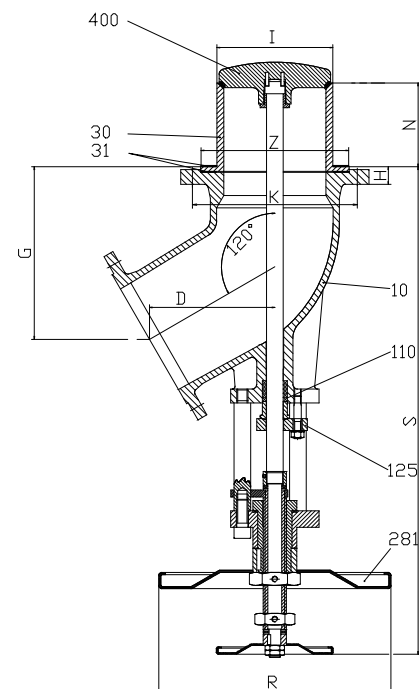
# INNO-TANK

## BOTTOM OUTLET VALVES

### Globe Type

**High Performance Tank Bottom Outlet valves specifically designed for tank/vessel outlet service:**

- Versions include disc to open into tank or into valve
- Different outlet port angles available, 135°(45°), 120° (60°), 90°
- Inlet/outlet flanges acc. Doe ASME, DIN or custom made
- Inlet flange custom fit to applicable vessel



#### Advantages and Benefits:

- |                              |   |
|------------------------------|---|
| ■ Dead space free design     | ➡ Vessel allowed to drain completely  |
| ■ Crust breaking capability  | ➡ valves opening into tank for solids or crystalizing media                               |
| ■ High integrity packing     | ➡ TA-Luft packing system, Bellows Seal available  |
| ■ High integrity seat design | ➡ High performance metal to metal and soft seated options available for absolute shut off |

#### Features:

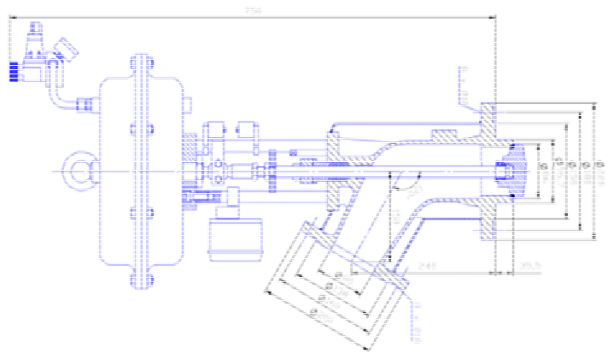
- Specifically designed bottom outlet valve for the applicable application
- Robust design for demanding applications, dead space free with absolute shut off
- Customs designed connection parts to fit your vessel

# INNO-TANK

## BOTTOM OUTLET VALVES Globe Type

### Specifications:

Sizes:	1" – 24" (DN25-DN600)
Pressure:	Cl150-2500 (PN10-PN420)
Materials:	Carbon, Stainless, Alloys, Nickel, Duplex
Actuation:	Manual, Electric, Pneumatic, Hydraulic
Options:	Heating Jacket, Surface Coatings, Sealing options, temp. sensor, leak detection, valve health monitoring system



### Manufacturer:

MIAM GmbH  
Werner-Heisenberg-Str. 33  
39106 Magdeburg  
Germany  
Tel: +49 391 634 1967 1  
Fax: +49 391 634 1967 99  
sales@miam-armaturen.de

### Distribution & Sales: